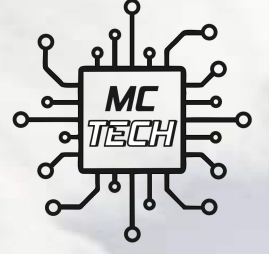


MC TECH

— EMULATOR —




KULLANIM KILAVUZU

Peugeot Rifter MD1CS003 Adblue Emülatör Kurulumu

EURO 6



 **0545 195 71 45**

 www.mctech.com.tr

 www.mctechemulator.com

 info@mctechemulator.com

Peugeot Rifter MD1CS003 Adblue Emülatör Kurulumu

Emülatörümüz bazı MD1CS003 modellerinde giriş NOx sensörü simülasyonunu desteklememektedir. Eğer emülatör bağlantısından sonra giriş NOx sensörü hata kodu alırsanız, giriş NOx sensörünü yerine takmanız gerekir.

70 PİNLİ SOKET



PİN 4

PİN 33

PİN 49

EMÜLATOR



SİYAH

KAHVERENGİ

BEYAZ

KIRMIZI

SARI

YEŞİL

120 PİNLİ SOKET



PİN 86

PİN 59

PİN 38

120 Sokette Pin 38 ve Pin 59
Can Hatları yoksa
70 Sokette Pin 35 ve Pin 51 Can
Hattına Bağlayabilirsiniz

| | |
|------------|-----------------|
| EMÜLATÖR | 70 Pinli Soket |
| SİYAH | PİN 4 |
| BEYAZ | PİN 49 |
| KAHVERENGİ | PİN 33 |
| EMÜLATÖR | 120 Pinli Soket |
| YEŞİL | PİN 38 |
| SARI | PİN 59 |
| KIRMIZI | PİN 86 |

Çekilecek Soketler:

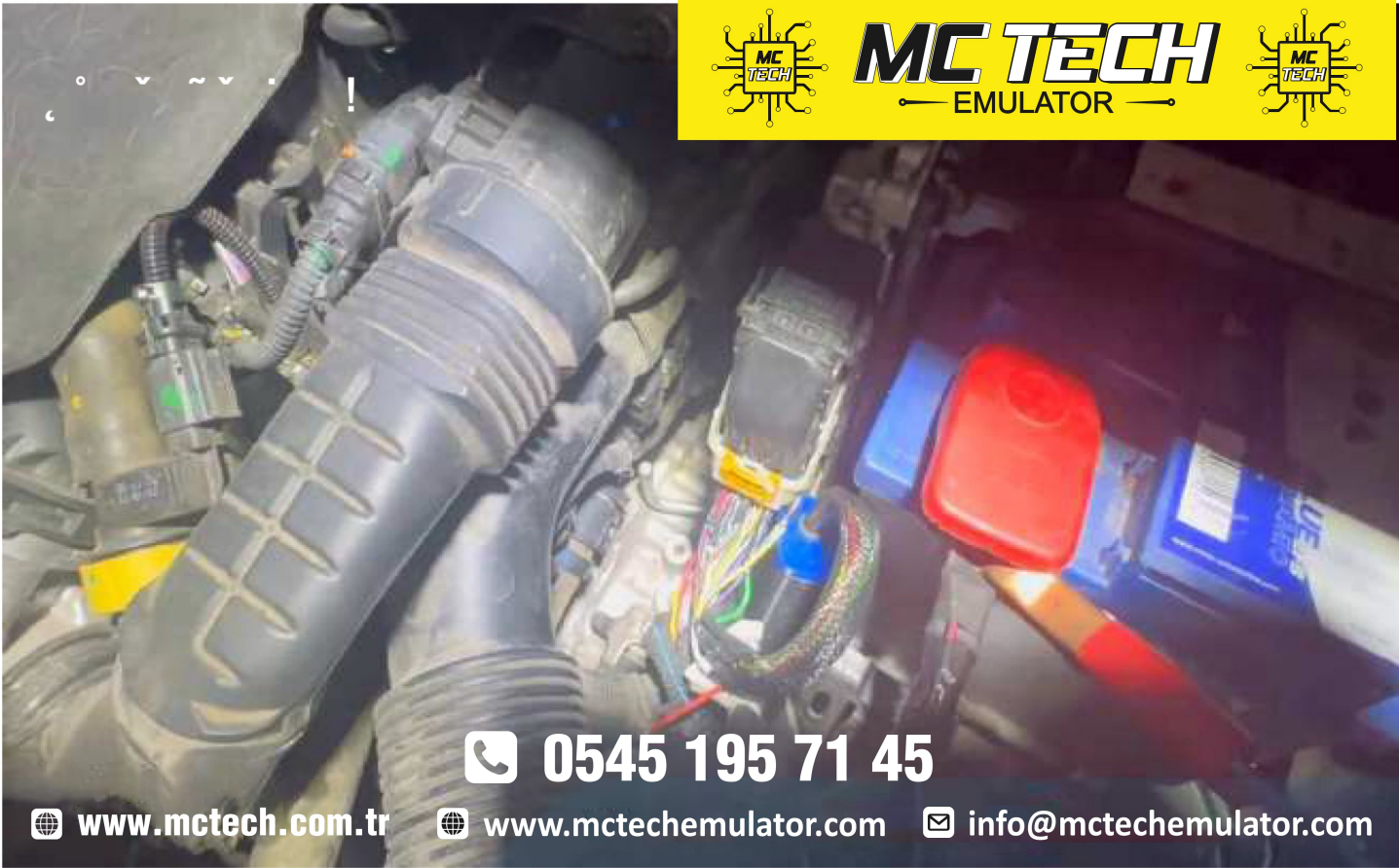
Giriş NOx Soketi


Çıkış NOx Soketi

PM sensörü

Adblue Pompa Soketi



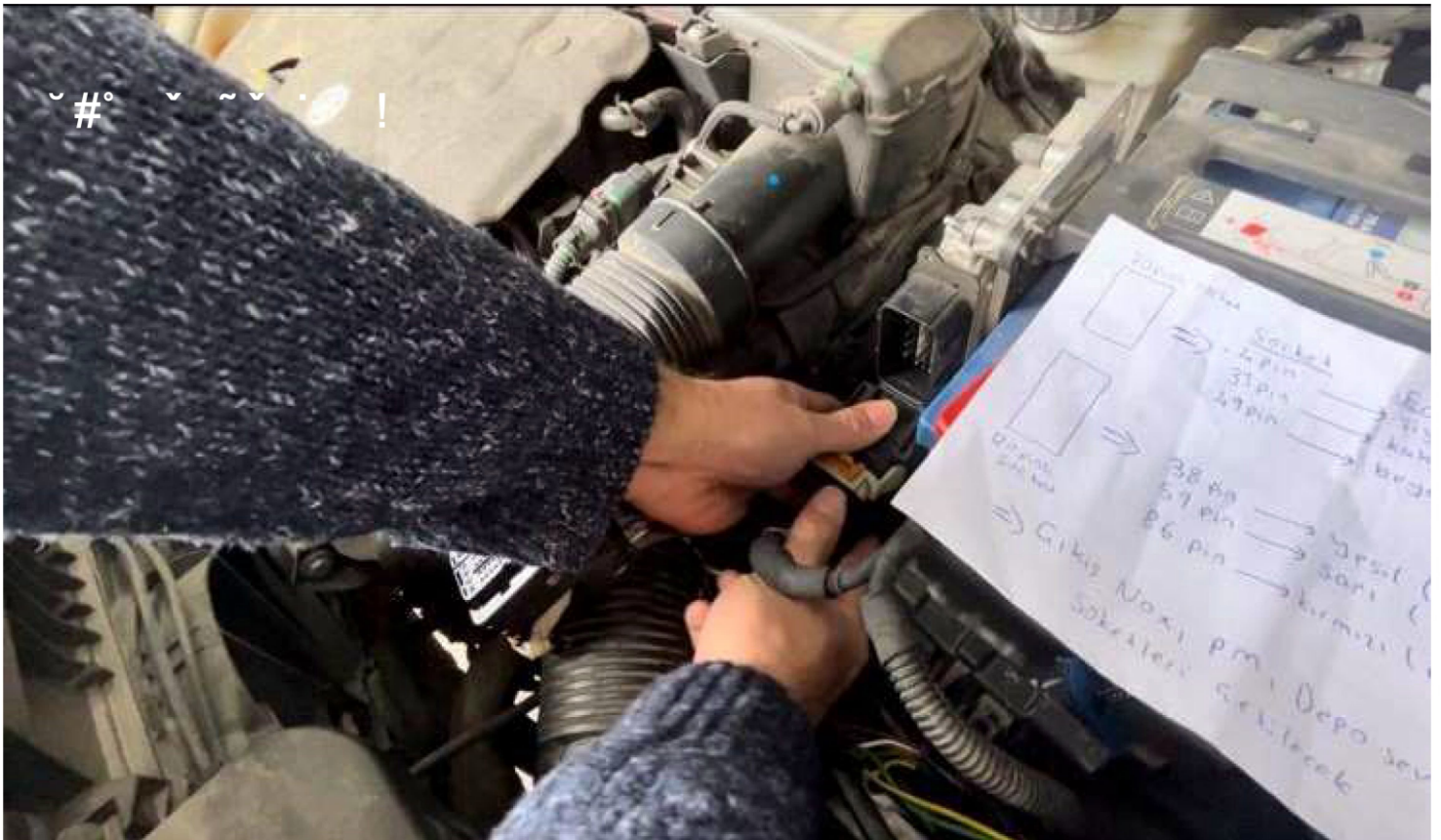


 **0545 195 71 45**

 www.mctech.com.tr

 www.mctechemulator.com

 info@mctechemulator.com



 **0545 195 71 45**

 www.mctech.com.tr

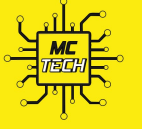
 www.mctechemulator.com

 info@mctechemulator.com






MC TECH
— EMULATOR —

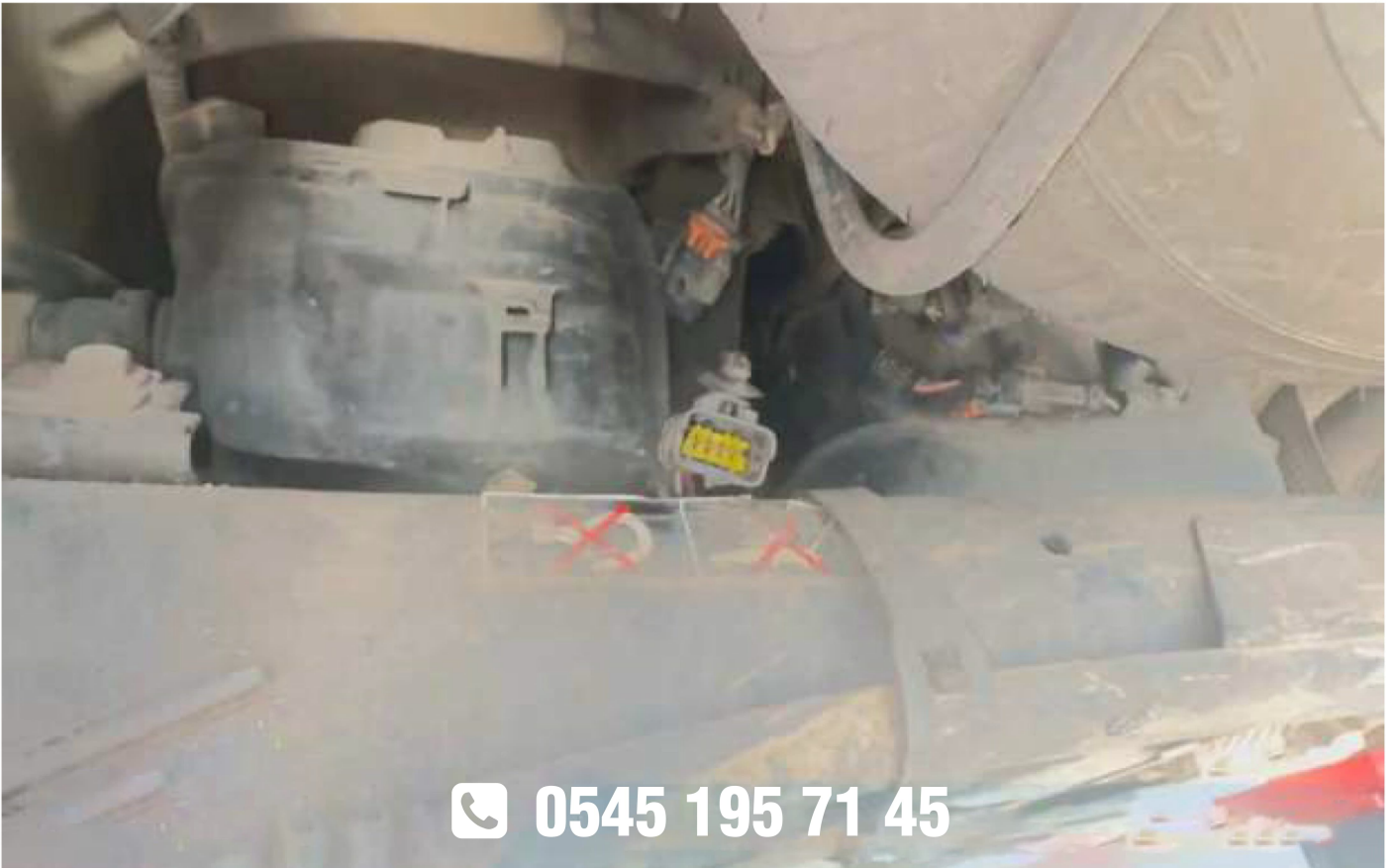


 **0545 195 71 45**

 www.mctech.com.tr

 www.mctechemulator.com

 info@mctechemulator.com



 **0545 195 71 45**

 www.mctech.com.tr

 www.mctechemulator.com

 info@mctechemulator.com